

## Charming one bedroom apartment in Berlin Friedenau with piano

short-term rental apartment	Rent incl. add. costs 1.400,00 EUR per Month	Living space ca. 65,00 qm	Number of rooms 2,0	Available from 14.02.2025
--------------------------------	---	------------------------------	------------------------	------------------------------

### Other dates

District	Tempelhof-Schöneberg
Deposit	2.400,00 EUR
Floor	4.Floor
Available until	Open-ended
Minimum rental length	90 days
Maximum number of tenants	2
Smoking / Nonsmoker	Non-smokers only
Balcony	yes
Elevator	No
Garden	No

### Facilities

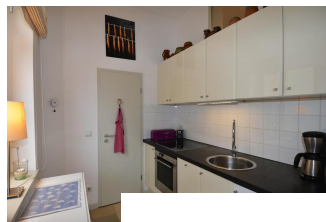
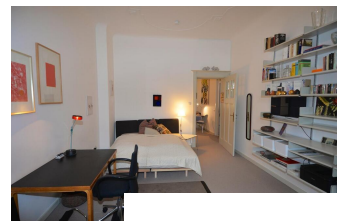
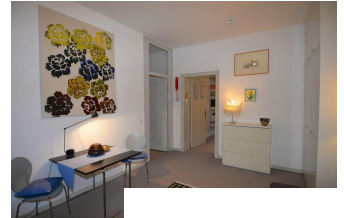
- comfortable
- sleeping couch
- tiled floor
- refrigerator
- central heating
- table/desk
- doublebed
- balcony
- radio
- cooker
- **flooring material**
- tiles
- **kitchen**
- fitted kitchen
- **technics**
- Wifi reception
- **type of heating**
- central heating system
- bathroom with tub
- carpeted floor
- internet
- washing machine
- TV
- microwave
- fitted kitchen
- 
- pictures available

### References

Please read our Notes on currency conversion under <http://www.homecompany.de/en/currency-info>

### Website synopsis

<http://berlin.homecompany.de/en/object/AG145915>



### Description

Modern living in a beautiful 2-room old building apartment in the friendly Friedenau district with a grand piano. The apartment is in the front building of a classic old Berlin building (4th floor, without elevator).

The hallway with a modern indoor bathroom with skylight leads to the two bright rooms.

The right is a walk-through room with floor-to-ceiling custom cabinetry, sofa (can be used as a guest bed) and dining area. From there you get to the kitchen with a kitchenette, sideboard and small storage room (contains, among other things, the washing machine).

The left room with a stucco ceiling opens onto the balcony. It contains a large designer bookcase, a comfortable armchair, television, desk and a large double bed. You can sit on the balcony for two and look at the treetops and the old buildings opposite.

The apartment is wonderfully quiet and centrally located near Rüdeshimer Platz (U3 line, including to the FU Berlin) and Bundesplatz (U9 and S-Bahn ring) and only about 15 minutes on foot from the Schlossstrasse (Steglitz) shopping mile.

The Schöneberg Volkspark is also within walking distance.

360 panoramic view:

<https://tour.feelestate.com/view/portal/id/VZ8DR>