

First time use - 4 bedroom flat, at Ku'Damm central

short-term rental apartment	Rent incl. add. costs 8.225,00 EUR per Month	Living space ca. 235,00 qm	Number of rooms 7,0	Available from 15.08.2024
--------------------------------	---	-------------------------------	------------------------	------------------------------

Other dates

District	Charlottenburg-Wilmersdorf
Deposit	15.000,00 EUR
Floor	2.Floor
Available until	Open-ended
Minimum rental length	90 days
Maximum number of tenants	8
Smoking / Nonsmoker	Non-smokers only
Balcony	yes
Elevator	No
Garden	No

Facilities

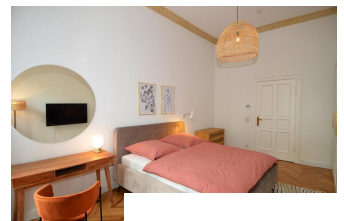
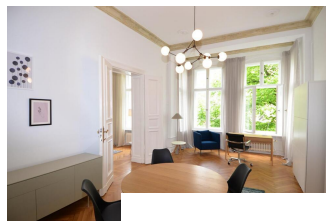
- balcony	-
- bed	- doublebed
- bathroom with shower	- fitted kitchen
- internet	- cable/Sat TV
- kitchen	-
- refrigerator	- microwave
- parquet flooring	- radio
- dishwasher	- central heating
- washing machine	- bathroom with tub
- TV	- pictures available
- table/desk	- comfortable
- cooker	- tiled floor
- sleeping couch	
- bathroom	
- with shower	
-	

References

Please read our Notes on currency conversion
under <http://www.homecompany.de/en/currency-info>

Website synopsis

<http://berlin.homecompany.de/en/object/AG144827>



Description

First occupation after extensive renovation and completely newly furnished.

The beautiful old building has high ceilings with lavishly renovated stucco decorations. All floors have a first-class bone parquet, the two bathrooms, the guest toilet and the two kitchens are tiled. 2 apartments in one! You have the opportunity to use two apartments as one. You then have two living rooms, one of which has a balcony. Four bedrooms, each with a double bed, one of which has a balcony.

Two fitted kitchens, one of which is very large and offers every comfort. A dining room, which also has a desk and can be used as a study. Two bathrooms, one with a shower and a bath and the other with a shower. Furthermore a guest toilet. Two washing machines and internet are in the apartment.

All rooms are accessible from a central hallway. There are no connecting rooms.

Location: The apartment is located in Berlin Halensee not far from Kurfürstendamm. The S-Bahn station Halensee can be reached in 5 minutes (S1, S2, S5 and S 26). The next door Westfälische Str. offers various shops and retailers for shopping.

Location: The apartment is located in Berlin Halensee not far from Kurfürstendamm. The S-Bahn station Halensee can be reached in 5 minutes (S1, S2, S5 and S 26). The next door Westfälische Str. offers various shops and retailers for shopping.

360 Pictures:

<https://tour.feelestate.com/view/portal/id/VZVYP>