

2019 Flat near Ostbahnhof

short-term rental apartment	Rent incl. add. costs 1.880,00 EUR per Month	Living space ca. 72,00 qm	Number of rooms 2,0	Available from 07.10.2024
--------------------------------	---	------------------------------	------------------------	------------------------------

Other dates

District	Lichtenberg
Deposit	3.000,00 EUR
Floor	3.Floor
Available until	Open-ended
Minimum rental length	90 days
Maximum number of tenants	2
Smoking / Nonsmoker	Non-smokers only
Balcony	yes
Elevator	Yes
Garden	No

Facilities

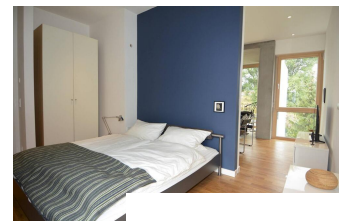
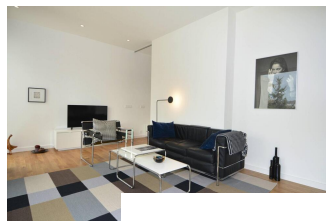
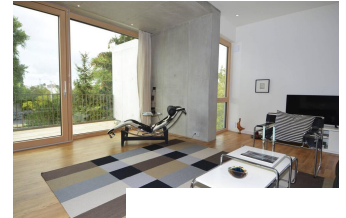
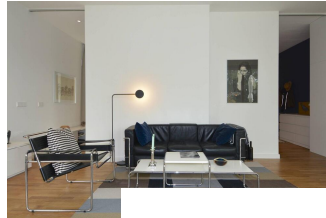
- **flooring material**
- parquet
- **kitchen**
- with dishwasher
- **technics**
- Wifi reception
- tiles
- fitted kitchen

References

Please read our Notes on currency conversion under <http://www.homecompany.de/en/currency-info>

Website synopsis

<http://berlin.homecompany.de/en/object/AG134690>



Description

The furnished 2-room apartment in the 2019 completed modern new building is accessible via a lift without a threshold. The apartment itself is barrier-free - a light-filled loft with oak floors, natural stone bathrooms, underfloor heating, self-sufficient ventilation system and triple glazed, floor-to-ceiling panoramic windows with sliding doors to the spacious roof terrace. The living room with open fitted kitchen, dining table and workspace oriented to the west with a wide view of the inner city green of a garden plot. The apartment has a ceiling height of 2.90 m, is equipped with a dimmable downlight lighting system and has a storage room on the ground floor. The high-quality furniture is modern and stylish selected. The bedroom is illuminated by the morning sun and is furnished with double bed (1,80x2,00m), built-in wardrobe and flat screen TV. The bath has daylight, a floor-level rain shower and a towel radiator. Towels, extra bed linen, kitchen equipment such as dishes, glasses, cutlery, pots etc. are included. The apartment includes a built-in safe (space for four binders) and a private parking space at the house - both separately rented in addition. To the house and for the residents is a beautifully designed community garden.

360 panoramic view:

<https://tour.feelestate.com/view/portal/id/VVV97>

handicapped accessible
 double bed
 fitted kitchen
 internet
 american kitchen
 parquet flooring
 parking place
 radio
 dishwasher
 telephone
 terrace
 table/desk
 bathroom with tub
 washing machine
 pictures available
 cooker
 comfortable
 tiled floor

Print out 29.04.2024