

Furnished apartment in Prenzlauer Berg, Berlin

| | | | | |
|--------------------------------|---|------------------------------|------------------------|------------------------------|
| short-term rental apartment | Rent incl. add. costs 2.300,00 EUR per Month | Living space ca. 66,00 qm | Number of rooms 2,0 | Available from 30.04.2024 |
|--------------------------------|---|------------------------------|------------------------|------------------------------|

Other dates

| | |
|---------------------------|----------------|
| District | Pankow |
| Deposit | 2.300,00 EUR |
| Floor | 5.Floor |
| Available until | Open-ended |
| Minimum rental length | 60 days |
| Maximum number of tenants | 4 |
| Smoking / Nonsmoker | Not Applicable |
| Balcony | yes |
| Elevator | No |
| Garden | No |

Facilities

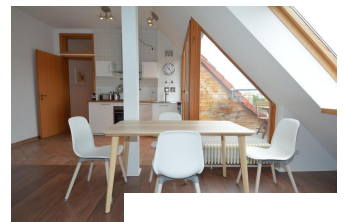
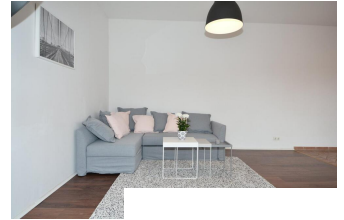
- | | |
|-------------------|---------------------|
| - washing machine | - bathroom with tub |
| - kitchen | - |
| - refrigerator | - terrace |
| - | - TV |
| - internet | - doublebed |
| - sleeping couch | - bed |
| - fitted kitchen | - comfortable |
| - cooker | - offene kitchen |
| - kitchen | |
| - fitted kitchen | |
| - technics | |
| - Wifi reception | |

References

Please read our Notes on currency conversion
under <http://www.homecompany.de/en/currency-info>

Website synopsis

<http://berlin.homecompany.de/en/object/AG131435>



Description

First use! This well lighted one bedroom apartment was newly furnished, and it is located in a beautiful side street in the heart of Prenzlauer Berg. It comes with a washer, bathtub and separate shower, new kitchen with all kinds of equipment, internet, TV. Modern Berlin apartment with 2 terraces. Offering a doublebed and a fold out sofa bed, it is suitable for up to 4 persons.

Nice neighbourhood with a great variety of coffee shops, restaurants and nightlife. Only a short walking distance to underground station Schoenhauser Allee (U2 and urban rail S-Bahn).

Panorama View

<https://tour.feelestate.com/view/portal/id/VR6SZ>