

## Sunshiny Two Room Apartment in Berlin-Charlottenburg

short-term rental apartment	Rent incl. add. costs 1.490,00 EUR per Month	Living space ca. 65,00 qm	Number of rooms 2,0	Available from 15.11.2024
--------------------------------	---	------------------------------	------------------------	------------------------------

### Other dates

District	Charlottenburg-Wilmersdorf
Deposit	1.490,00 EUR
Floor	3.Floor
Available until	Open-ended
Minimum rental length	60 days
Maximum number of tenants	4
Smoking / Nonsmoker	Non-smokers only
Balcony	yes
Elevator	No
Garden	No

### Facilities

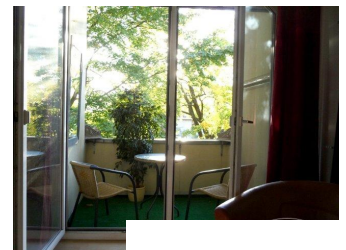
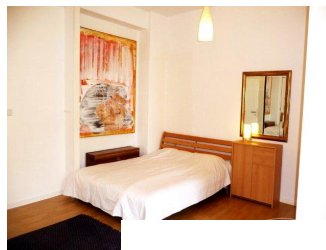
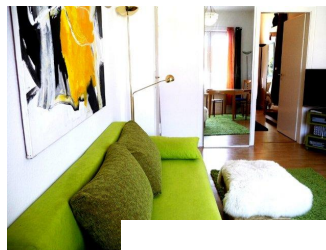
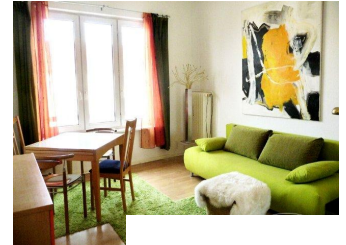
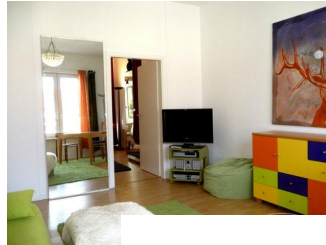
- |                            |                     |
|----------------------------|---------------------|
| - tiled floor              | - bathroom with tub |
| - fitted kitchen           | - washing machine   |
| - dishwasher               | - microwave         |
| - doublebed                | - sleeping couch    |
| - table/desk               | - balcony           |
| -                          | - TV                |
| - VCR                      | - comfortable       |
| - cooker                   | - kitchen           |
| -                          | - refrigerator      |
| - central heating          | - internet          |
| - <b>flooring material</b> |                     |
| - tiles                    |                     |
| - <b>kitchen</b>           | - fitted kitchen    |
| - with dishwasher          |                     |
| - <b>technics</b>          |                     |
| - Wifi reception           |                     |
| -                          |                     |

### References

Please read our Notes on currency conversion  
under <http://www.homecompany.de/en/currency-info>

### Website synopsis

<http://berlin.homecompany.de/en/object/AG112442>



### Description

Nice, sunny 2 room apartment in beautiful Charlottenburg, West Berlin location. This apartment is completely furnished and has a kitchen, dishwasher and washing machine. The apartment offers a doublebed and a pull-out sofa bed. The balcony is very sunny and faces Southwest. Nice and very central location near Kurfürstendamm and the S-Bahn station Halensee. Various shops and restaurants are nearby.

Print out 25.04.2024