

Central and furnished studio in Schöneberg

short-term rental apartment	Rent incl. add. costs 1.250,00 EUR per Month	Living space ca. 34,00 qm	Number of rooms 1,0	Available from 01.10.2024
--------------------------------	---	------------------------------	------------------------	------------------------------

Other dates

District	Tempelhof-Schöneberg
Deposit	2.380,00 EUR
Floor	5.Floor
Available until	Open-ended
Minimum rental length	90 days
Maximum number of tenants	1
Smoking / Nonsmoker	Non-smokers only
Balcony	yes
Elevator	Yes
Garden	No

Facilities

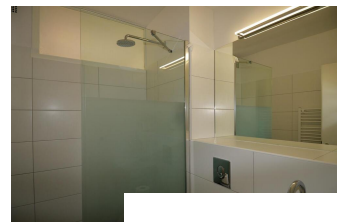
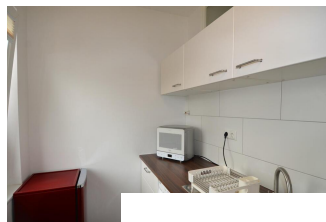
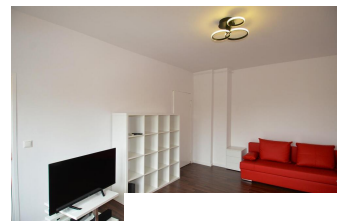
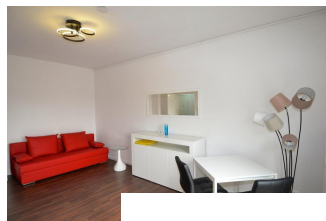
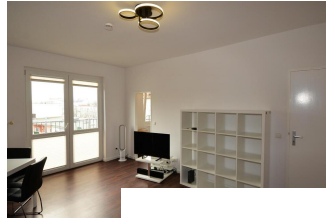
- | | |
|----------------------------|------------------------|
| - balcony | - |
| - sleeping couch | - bathroom with shower |
| - fitted kitchen | - internet |
| - refrigerator | - laminate floor |
| - microwave | - table/desk |
| - washing machine | - central heating |
| - bathroom | |
| - with shower | |
| - flooring material | |
| - laminate | |
| - kitchen | |
| - fitted kitchen | |
| - technics | |
| - Wifi reception | |
| - type of heating | |
| - central heating system | |

References

Please read our Notes on currency conversion
under <http://www.homecompany.de/en/currency-info>

Website synopsis

<http://berlin.homecompany.de/en/object/AG146293>



Description

Welcome to this charming 1-room apartment in Schöneberg! Enjoy a tranquil and newly renovated living space with a green view, situated near Winterfeldplatz. The balcony facing south provides a peaceful retreat, and inside you'll find laminate flooring, a washing machine, Smart TV, and a complete set of bed linens and towels. The living-bedroom features a comfortable sofa bed (140x200), and the modern bathroom adds a touch of sophistication. With an included internet flatrate, you're well-connected. Just a 5-minute walk leads you to the nearby subway station, making commuting a breeze. Welcome to your cozy haven!

360 Panoramic View:

<https://tour.feelestate.com/view/portal/id/VZTZD>

Print out 10.05.2024